

CHARM Community Pilot Awards

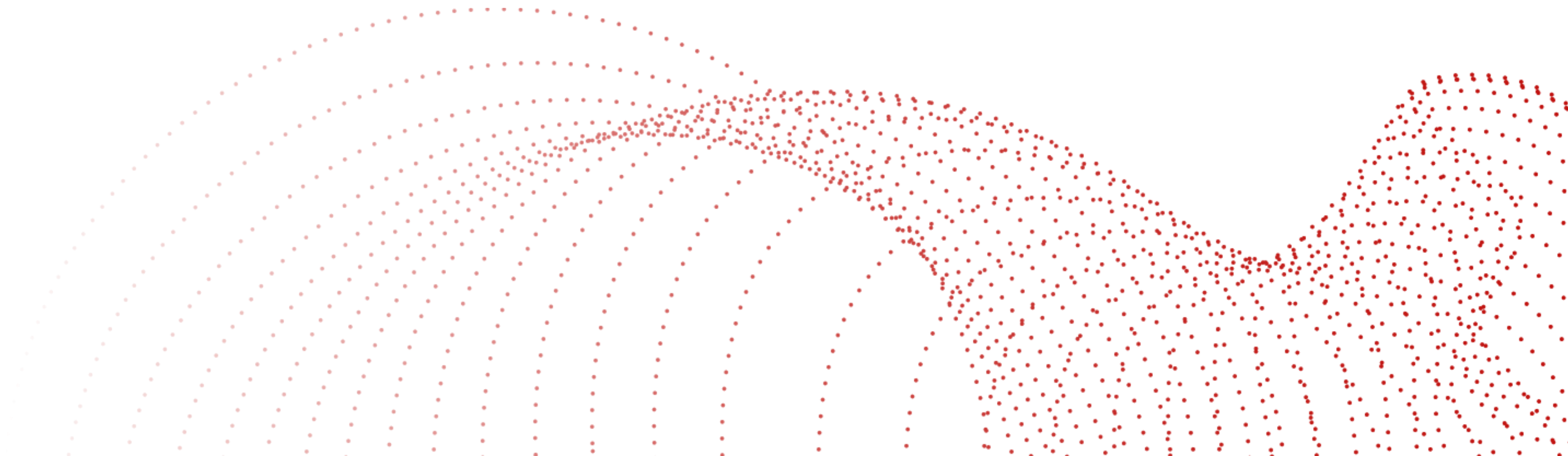
Informational Session

October 8th, 2025

CHARM Mission



The Center for HIV and Research in Mental Health (CHARM) at the University of Miami aims to promote, develop, and support high-impact, community-engaged HIV research addressing mental health and related disparities as a strategic and mentoring resource to end the HIV epidemic.



MHD Leadership



**Sannisha Dale,
PhD, Ed.M.**

Director

Professor,
Department of
Psychology



**Allan Rodriguez,
MD**

Co-Director

Professor of
Clinical Medicine,
Department of
Medicine



**Hansel E. Tookes,
III, MD, MPH**

Co-Director

Professor,
Department of
Medicine



**Meadgine Ilmet,
MPH, MPA**

*Clinical Research
Coordinator*

Department of
Psychology



**Candice Sternberg,
MD**

Associate Co-Director

Associate
Professor,
Department of
Medicine



**Daniel Enrique Jimenez,
PhD**

Associate Co-Director

Associate
Professor,
Department of
Psychology

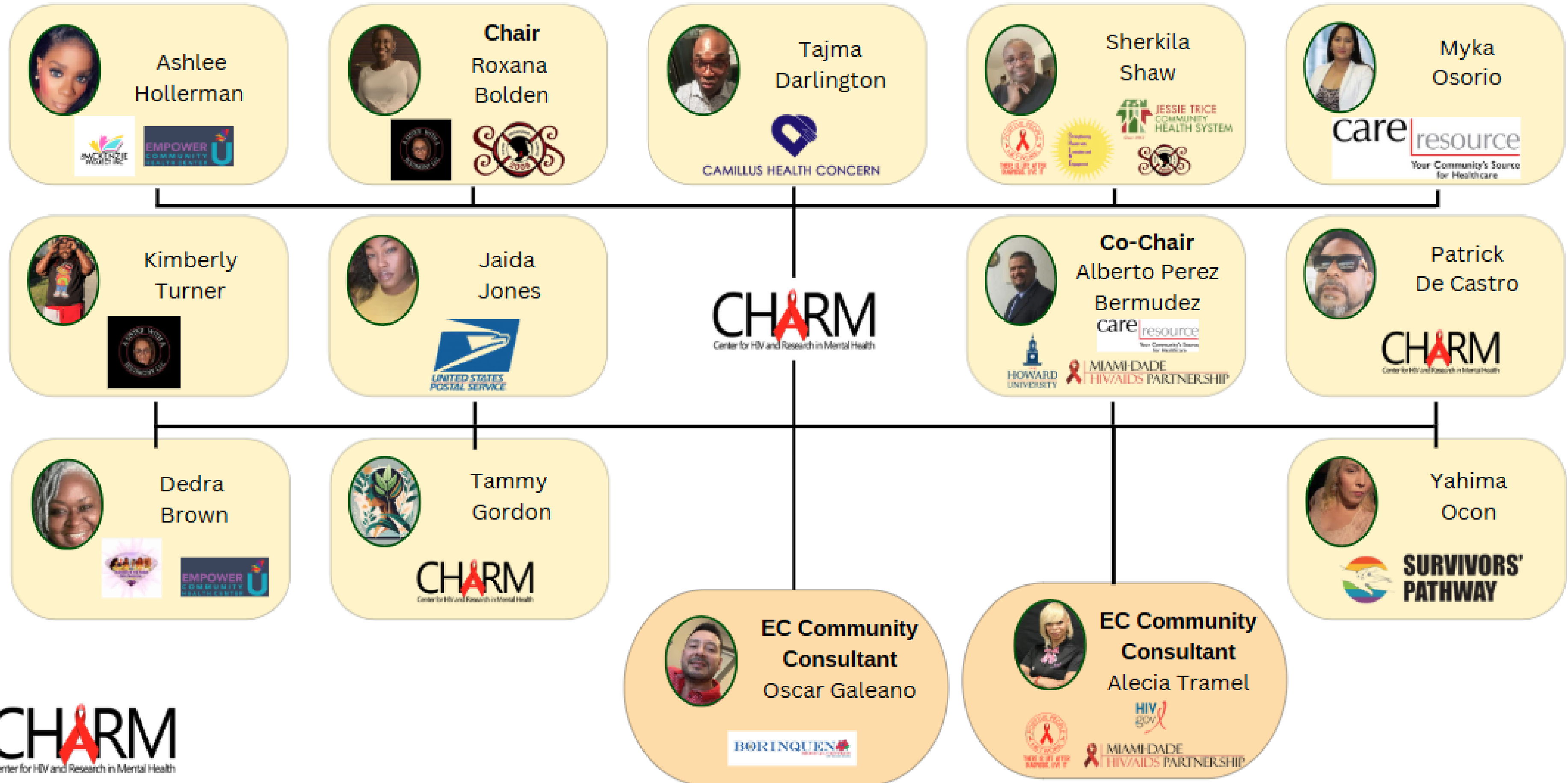


**Ame Leon,
MPH**

*Outreach
Coordinator*

Department of
Psychology

Community Advisory Board (CAB)



Purpose

These awards are intended to encourage community-centered research projects focused on HIV and Mental Health initiatives. Through our collaboration, we hope to financially support community-centered-research and position awardees for future funding. CHARM will be accepting applications for **community focused projects** in:

**HIV and
Sexual
Health**

**Mental
Health**

**Community
Engagement
and
Advocacy**

Program Eligibility

- Miami Community Based Organization
- Must identify a University of Miami (UM) collaborator
***required by full application submission. LOI can be submitted without.**
- Project must address the needs of the South Florida Community

Interest Areas

PrEP awareness, contraceptives/ condom use	Transgender Care/Services/ Access	Job Insecurity	Human Trafficking	Community Testing	Intimate Partner Violence, Sexual/Physical Abuse	Advocacy, learning to advocate for yourself/others. Being a co-conspirator; Policy/Social Justice
Criminal Justice/ Re-entering Society	Mental Health Intervention, Access, Awareness, or Stigma	Housing Insecurity/ Homelessness	HIV Criminalization	Capacity Building Initiatives	Sexual Health/ Sexuality	Food Insecurity
Substance Use, Narcan Training, Overdose Treatment	Other topics relevant to sexual health and other social determinants	Youth Services/Intervention	Disclosure	Sex Workers	Under-researched Communities Impacted by HIV	Congenital HIV/Neonatal Exposure

Award Timeline

RFA disseminated	10/1/2025
Informational Session (highly encouraged)	10/8/2025
Letter of Intent (LOI) Submission	11/1/2025
Full Application to CHARM	1/31/2026
Announcement of applications selected for funding consideration	2/20/2026
Start of award (Tentative)	3/1/2026
Award period (Tentative)	3/1/2026 - 2/28/2027

Letter of Intent (LOI)



Express your interest in completing a project!

Basic information about your study design

Includes organization information, target population, community engagement, and Faculty Collaborator

Need a Faculty Collaborator? Schedule a consultation with our coordinator Meadgine @ mfi13@miami.edu

Due: Saturday, November 1st, 2025 at 5PM EST

<https://redcap.miami.edu/surveys/?s=NDKMM3W8LFRCFT7K>





Full Application

Interested individuals must submit an application

Includes full proposal, study measures, participant recruitment, budget breakdown, and a video about you!

A Letter of Support (LOS) from your Faculty Collaborator and Organizational Leadership. Requests for these documents will be sent to these individuals directly.

Due: Saturday, January 31st, 2026 at 5PM

<https://redcap.miami.edu/surveys/?s=WH3JDAKAX89WEPAF>

Video Example

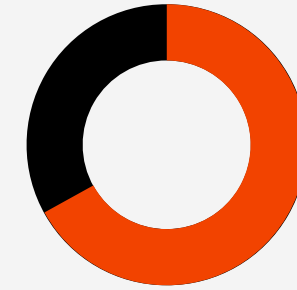
**Courtesy of Mayfaire
Medical (Transsocial),
Cohort 1**



**Link to video if you are viewing
on a mobile device:**

**[https://miami.box.com/s/0ysnjc
8buhv3yap3x9j15il37nzl9lp8](https://miami.box.com/s/0ysnjc8buhv3yap3x9j15il37nzl9lp8)**

Budget



Awards will be \$25,000

Direct Costs only

1 year Period: 3/1/26 - 2/28/27



Expenses should be restricted to personnel, research supplies, cost for subject participation, community engagement and technical support



Applicants must provide a budget justification

Budget Justification is the final section of the application

Evaluation

Innovation	Significance	Approach	Collaboration
Is the project original and innovative?	Does this study address an important problem for communities affected by HIV/AIDS and Mental Health?	Are the methods for collecting and evaluating the data appropriate? Can the project be completed in the award period?	Has the investigator identified a UM Faculty Collaborator to play a supporting/mentorship role?

Post Awards

Notice of Awards	February 20th, 2026
Community Advisory Board Meetings	Prior to project start, awardees must attend CAB meeting for feedback
Virtual Cohort Meeting	Monthly
Brief Reporting Survey	Monthly
Progress Report Survey	Bi-yearly
Research in Progress	Yearly (1)

CHARM Core Services

Administrative Core

provides scientific and programmatic leadership, management of the cores

Mental Health Disparities & Community Engagement Core

provides consultation on community engagement and culturally appropriate intervention approaches

Developmental Core

pairs applicants with mentors, develop a mentoring plan

Methods Core

provides assistance with study analysis, navigate statistical challenges

Equitable Implementation Science (EIS) Core

provide consultations on implementation science components of research projects

Thank you for attending our informational session!

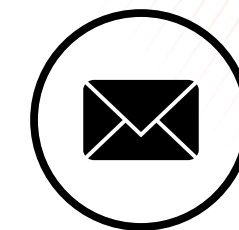


Scan ME for



Scan ME for
Full App

For all questions or concerns:



mfi13@miami.edu



(305)243-0033